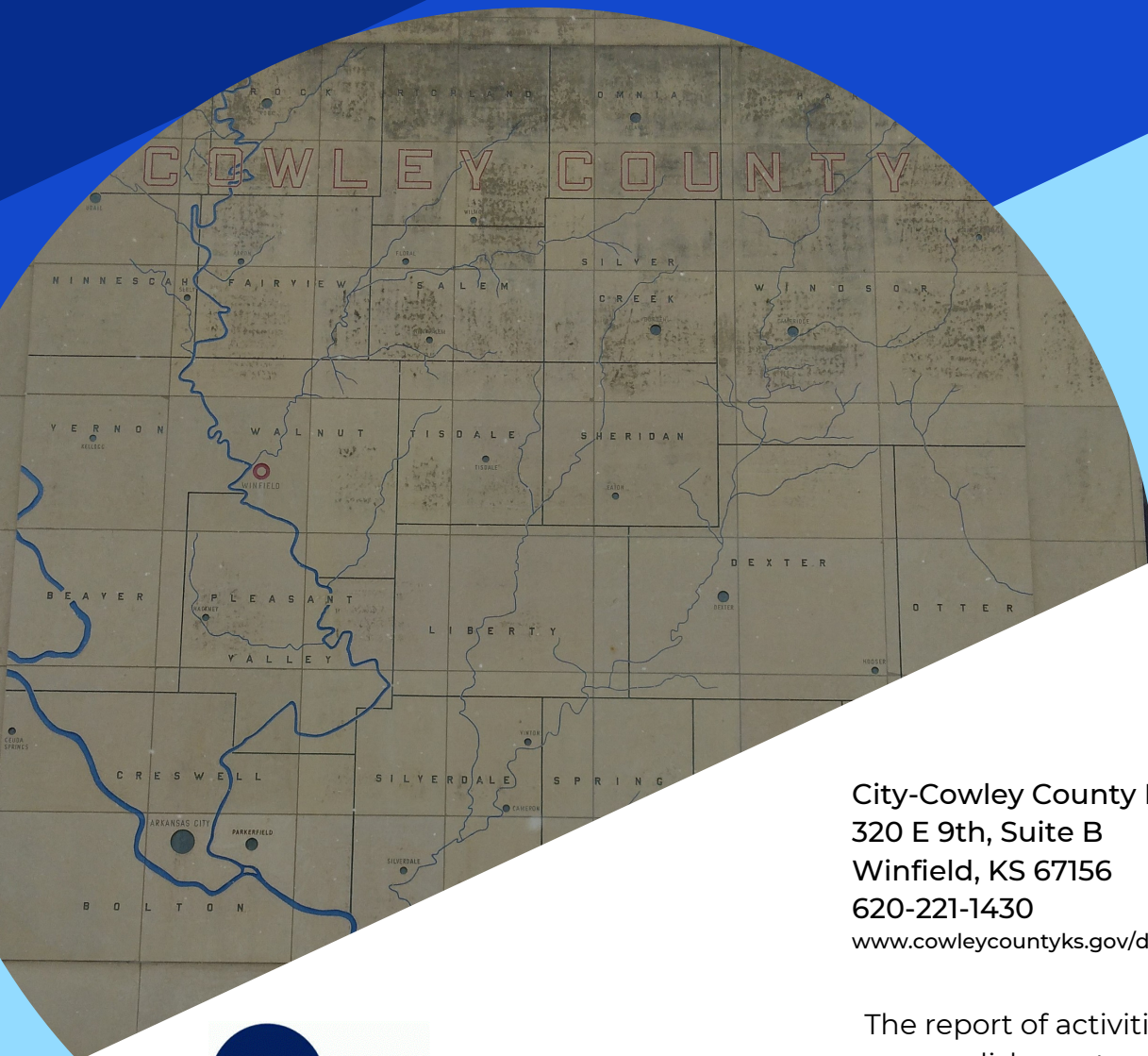


2021 ANNUAL REPORT OF ACTIVITIES

JOINT CITY-COWLEY HEALTH DEPARTMENT



City-Cowley County Health Department
320 E 9th, Suite B
Winfield, KS 67156
620-221-1430
www.cowleycountyks.gov/departments/publichealth



City-Cowley County
Health Department

Prevent ~ Promote ~ Protect

115 E. Radio Lane 320 East 9th, Suite B
Arkansas City, KS Winfield, KS

The report of activities and accomplishments of the Joint City-Cowley Health Department for the year ended December 31, 2021. This report is provided to the elected representatives and citizens of Cowley County, Kansas.



CITY-COWLEY COUNTY HEALTH DEPARTMENT

Our Vision

Cowley County residents enjoying healthy lives, exercising personal responsibility for their health and the health of their family members.

Our Mission

The City-Cowley County Health Department works to promote excellent health, prevent disease, and to protect the environment to benefit all our citizens.

Our Values

Prevent ~ Promote ~ Protect



Table of Contents

Vision, Mission, & Values	2
Letter from Administrator/Public Health Officer	4
The Board of Health	5
Program Report	
Key Accomplishments	6
Community Health	
Pandemic Response	7
Immunization Program	9
Communicable Disease Control	10
Public Health Emergency Preparedness	11
RISE Cowley	11
Children & Family Health	
Maternal & Child Health	
Healthy Start Home Visits	12
Safe Sleep	12
Pediatric Health Assessments	13
Turn a Page, Touch a Mind - Early Literacy Program	13
Tiny Teeth	13
Childcare Facility Licensing	13
Women, Infants, & Children	14
Family Planning (Title X)	15
Early Detection Works (EDW)	15
Environmental Health	16
Health Department Staff	18
Clients	19
Financial Report	20



MESSAGE FROM
THE
ADMINISTRATOR/
PUBLIC HEALTH
OFFICER

The year 2021 marked the 75th Anniversary of your local public health department. Pandemic response dominated the activities of the City-Cowley County Health Department each day. During the ongoing response, we worked without complaint to provide the best quality service to the community. We scheduled and administered thousands of vaccinations, we performed thousands of diagnostic tests, we issued countless numbers of consultations to people that were concerned and sick, and we provided thousands of public health orders to people so they could provide employers with proof of illness.

In early 2021 we managed the early scramble and short supply of vaccine locally and spearheaded the acquisition of additional vaccine so all who wanted vaccination were able to be treated. During a time of great social discord, we consistently respected personal choice. On a weekly basis we provided routine reports of information focused solely on what was happening in Cowley County, so that our residents could be informed. We enjoyed the short pandemic break in Spring that had many believing COVID was all over with, only to see variant after variant rise up and make their way through the population.

Along the way we were able to assist in the resumption of activities that are trademarks of Cowley County. The local county and 4-H Fair, the Walnut Valley Festival and Arkalalah all happened on schedule as well as numerous smaller music events, art fairs, farmers markets and social events.

While the pandemic remained relentless, the Health Department was able to return to many of the normal service activities including childhood and adult vaccination clinics for lifetime diseases, and prevention activities to curb influenza and other illness. In meeting all of these challenges, the Health Department set records for the number of services provided to the community. The combined value of pandemic services and the normal preventative of services delivered to Cowley County residents was well over one million dollars during 2021, an all-time high.

We were grateful to receive additional funding from the state and federal government to respond to the pandemic, but sadly we also learned that we would have to endure a reduction in funding from the local tax base having our local funding cut by 15% for the new year.

We learned many lessons during 2021 a main focus was on our ability to deliver high quality services to the community under any circumstance. Painfully we learned that our facilities are not ideal as currently structured and that our population would benefit from a modern well equipped health department with space and access to provide services in a central location. We are hoping that this issue can be explored further and that a solution can be found that will secure high quality service for the residents of Cowley County for generations to come.

It has been written, "may you live in exciting times" I feel we have accomplished that and look forward to a bit less excitement in the year ahead. In any event the staff and I will continue to hold true to our tasks of preventing illness and disease, promoting good health for all, and protecting our residents from poor health outcomes. Prevent – Promote – Protect!

Stay well,

Thomas Langer

City-Cowley County Health Department

2021 Annual Report to the Community

In 1946, the Joint City-Cowley County Board of Health was formed. Our Board of Health was one of the first eighteen established within the state of Kansas and, to this day, retains the same structure that was designed by the original founders. The Board's primary responsibilities are to maintain, promote, and evaluate the City-Cowley County Health Department.

The Board of Health is assembled by nine appointments made from local governing bodies. The Cowley County Commission appoints three at large members, one physician, and one dentist. The cities of Arkansas City and Winfield each appoint one member. Unified School District Boards #462 and #471 each appoint one member. Once appointed, members of the Board serve three-year terms. The Board annually elects a Chair and Vice-Chair in January. The Health Department's Administrator serves at the pleasure of the Board as Secretary-Treasurer. A Licensed Physician is contracted to serve as a Medical Consultant to advise the Public Health Officer/Administrator on medical matters. The Board maintains two offices, one in Winfield and another in Arkansas City.

2021 Board of Health Members:

K.C. Colvin- Chair
Mary Benton- Vice-Chair
Anita Judd-Jenkins
Dared Price, PharmD
Lori Schwartz, RN
Nick Rogers, DDS
Rick Shaffer
Sandra Jirak, BSN, RN
Physician Vacant
Thomas Langer, MPA- Secretary-Treasurer

Appointed by:

USD # 471 Board of Education
Arkansas City Commission
Cowley County Commission
Winfield City Commission
Cowley County Commission
Cowley County Commission
USD # 462 Board of Education
Cowley County Commission
Cowley County Commission
Health Department Administrator

This constitutes the Annual Report of Activities to the local appropriating units of government for the City-Cowley County Health Department as required in our founding Constitution and the Bylaws of the Board of Health. This report is evidence that we are continuing to fulfill our mission within the community. While a report such as this strives to be comprehensive it cannot detail everything that occurred. Anyone that wishes to learn more about Health Department activities is encouraged to contact our office at 620-221-1430.

Key Accomplishments

Pandemic Response:

- Continued to lead the local COVID-19 response.
- Led COVID-19 vaccine distribution efforts.
- Administered over 10,000 COVID-19 Vaccines.
- Expanded immunization services geographically through mobile clinics.
- Expanded diagnostic testing capacity by increasing the variety of tests offered.
- Enrolled as a Community Testing Partner and earned a place on the Kansas Testing Map.
- Increased communication with the community by providing weekly updates from the Public Health Officer.

Community Health:

- Administered over 8,000 Non-COVID 19 Vaccines.
- Facilitated case management for local school districts, long-term care facilities and the broader community of Cowley County.
- Provided verbal and written consultations and issued quarantine and/or medical isolation orders to mitigate the spread of communicable diseases within the county.
- Developed a comprehensive Immunization Action Plan (IAP) to increase immunization services and to measure for effectiveness.

Children & Family Health:

- Added \$530,000 to the local economy and provided monthly assistance to 900 families through the Women, Infants, & Children Program (WIC).
- Provided inspections for over 50 childcare facilities in Cowley County.
- Provided 47 postpartum and 23 prenatal visits as part of the Healthy Start Home Visits program.
- Provided over 1,100 Family Planning service visits under Title X in 2021.
- Provided referrals and consultation for the Early Detection Works program.
- Performed 527 pediatric health assessments.

Environmental:

- Inspected, permitted, and implemented wastewater systems designed for the best fit in their environment.
- Provided water screening for early detection and elimination of contaminants.
- Ensured safe building standards and designs for new projects within Cowley County.
- Continued the preservation and conservation efforts of Cowley County's floodplains for our resident's continued health and enjoyment.
- Responded to nuisance concerns within the county and resolved them in a quick and amiable manner with the responsible parties.

State & Regional:

- Provided input to the Kansas Association of Local Health Departments vital to the advancement of the Kansas Foundational Public Health Services Model in local health departments.
- Served in advisory capacity to the Kansas Department of Health and Environment to provide input from mid-sized rural community health departments.
- Provided leadership to the South-Central Metro Region of Counties (Cowley, Butler, Sumner, Harvey, Reno Sedgwick, Marion).

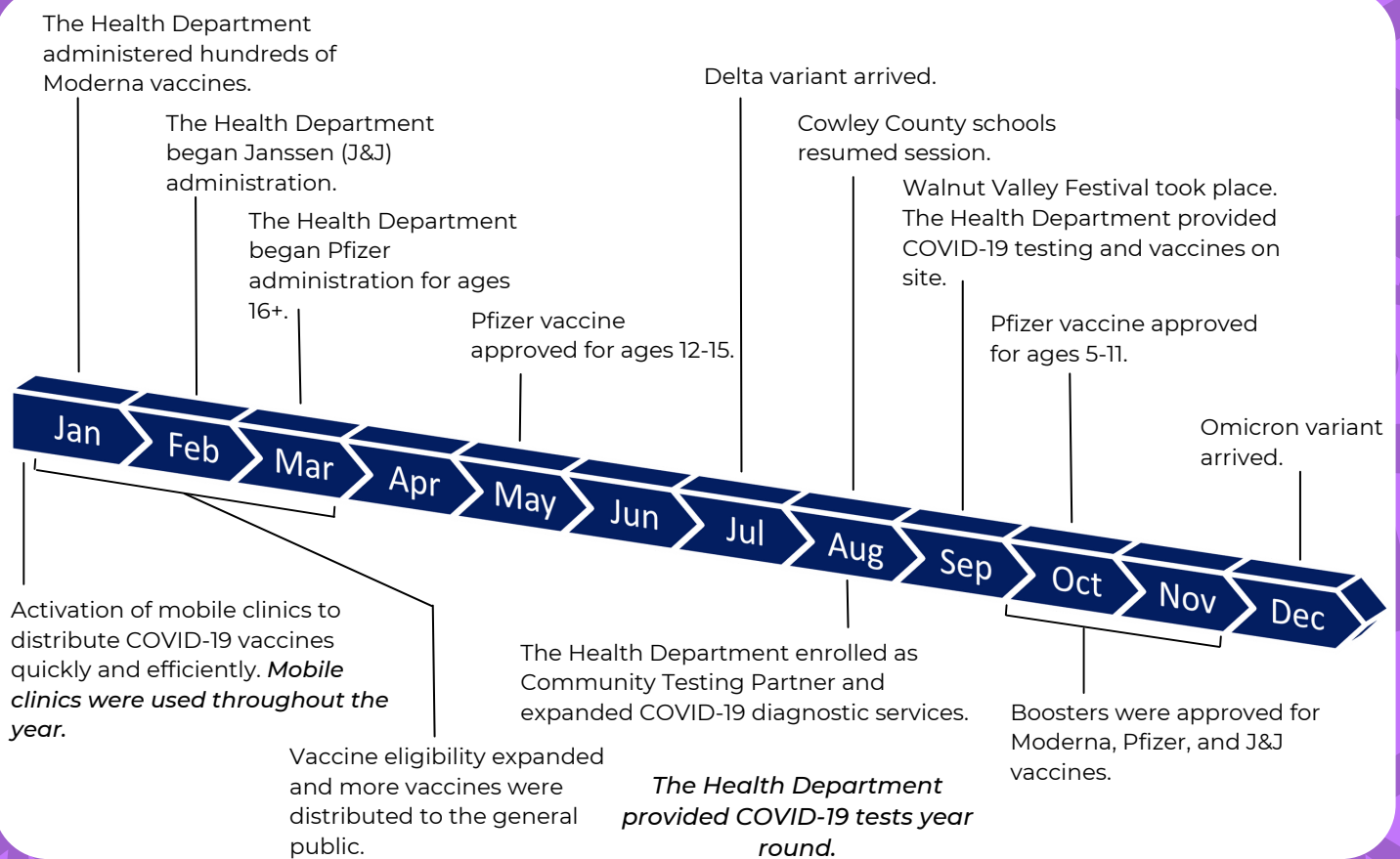
Locally:

- Fostered new community partnerships with local businesses.
- Participated in the Community Health Needs Assessment (CHNA) and Community Health Improvement Plan Development (CHIPD).
- Assisted numerous organizations with resumption of normal operations.
- Resumed the Health & Safety Fair

Community Health

Pandemic Response

In 2021, we remained actively involved with COVID-19 response efforts. These efforts have shifted greatly throughout the pandemic and have required **consistent monitoring and reshaping of efforts**. We have eagerly risen to the occasion each time by adapting our approach to reflect the current needs of the community. Continued demand for COVID-19 testing, COVID-19 vaccine rollout, regular changes to COVID-19 guidance, desire for normalcy and general pandemic fatigue were a few of the many trials faced at the Health Department. Below is a timeline of major events that impacted our pandemic response.

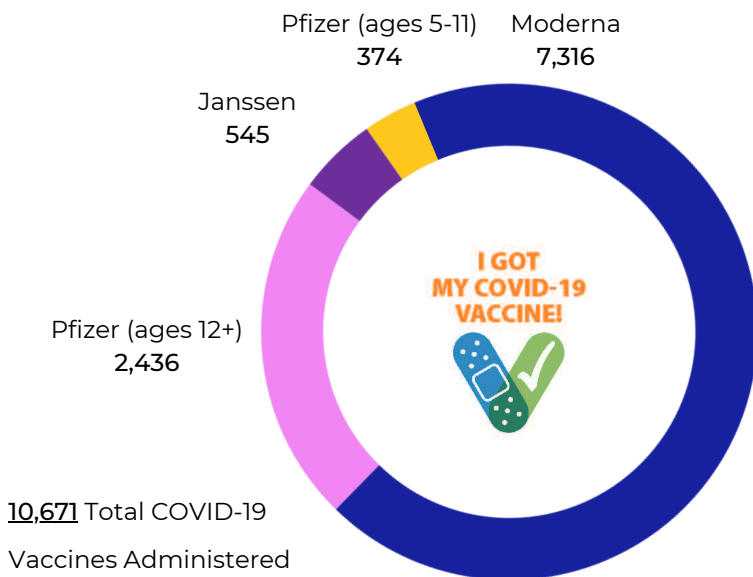


Pandemic Response Continued

At the start of the year, we were conducting COVID-19 testing at the Winfield Fairgrounds in Barn 4 because of demand that extended beyond the space at the Health Department. Case numbers were high, temperatures were low, and most specimens were being sent to the Kansas Health and Environment's Laboratory in Topeka, KS with a turnaround time of 3-4 days. As testing demand declined, we discontinued testing at the Fairgrounds and returned to the Winfield Health Department. Later in August, we expanded our COVID-19 testing capacity by becoming a Community Testing Partner and earning a place on the Kansas Testing Map. This expansion introduced less invasive antigen and saliva test options with quicker turnaround times. To date, we offer 4 different COVID-19 testing options.



COVID-19 Vaccines Administered



Once COVID-19 vaccines became available in Cowley County, we quickly initiated vaccine distribution effort. We worked diligently to implement new strategies to maximize our efforts and distribute vaccines at the convenience of all who were eager to receive them. Health Department clinic hours were expanded to offer Saturday hours and mobile clinics were deployed to expand our geographic reach. Partnerships with local schools, long term care facilities, and businesses allowed for us to provide vaccines at their facilities. Resumption of community events such as the Walnut Valley Festival created opportunities for the formation of new partnerships and allowed for services to be offered to attendees. In 2021 we provided 10,671 COVID-19 vaccines to reduce the incidence of COVID-19 infection.

In 2021, we worked with the community to increase communication and encourage strategies proven to minimize the spread of illness, and provide real-time data to help Cowley County residents make informed decisions about their health. Increased social media presence and consistent health updates from the Public Health Officer allowed us to achieve a level of transparency with the community. Increased communication paved the way for us to facilitate case management, contribute to the development of gating policies, and assist with the resumption of long-time events and ease transitions to normalcy around the county.

Immunization Program

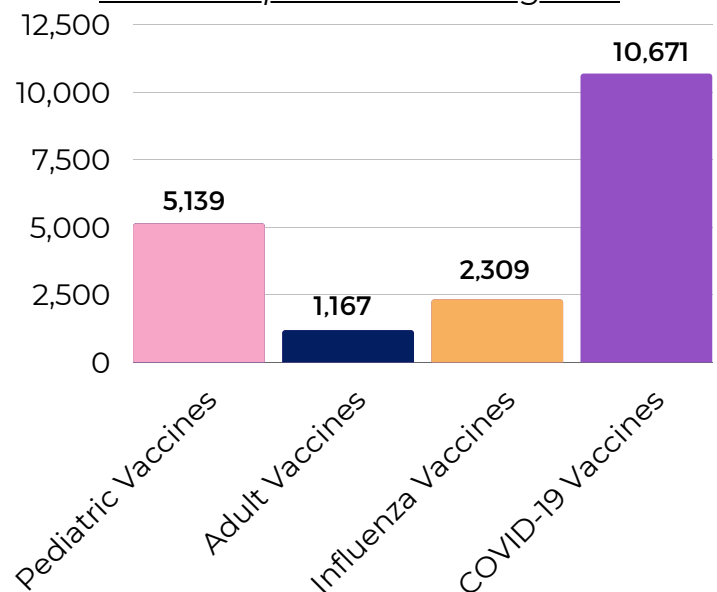
Immunization is a process that allows for individuals to be protected or become immune from disease through vaccine administration. Vaccines provide protection by training the body's immune system to combat infection when exposures to harmful pathogens occur. Using vaccines to achieve immunity is a safe and effective alternative to contracting an illness and suffering its effects and severe disease.



Immunization is a cost-effective, preventative tool proven to reduce life-threatening infectious diseases. Engaging in immunization processes provides health and economic benefits at both the individual and population levels. Increased immunization reduces the incidence of disease and by doing so reduces costs associated with taking time off work, receiving treatments, hospitalization, and death.

In 2021, the Health Department prioritized expanding immunization services to protect the health of the population and provide relief from pandemic fatigue. We continued to provide age-appropriate vaccinations for all ages and worked diligently to ensure that children that missed out on receiving their vaccines in 2020 were able to get caught up in a timely manner. Immunization services were expanded geographically and were provided in convenient locations around the county such as schools, places of employment, and at community events.

Vaccines Administered by the Health Department During 2021



While we celebrate the immunization achievements of 2021, it is important to recognize the severity of infectious diseases. Immunization is a proven tool for controlling and eliminating such illnesses. Should diseases such as measles, mumps, rubella, polio, tetanus, smallpox, chicken pox, or others re-emerge, the effects could be devastating. To prevent such events from occurring, the Health Department will employ its **Immunization Action Plan (IAP)** that was developed to help us continue to build on our success from 2021. The IAP will allow us to actively measure immunization progress from year to year. We are excited to implement new opportunities in 2022 to expand immunization services to best serve your needs.

Communicable Disease Control

To protect population health, the Health Department provides epidemiological services in conjunction and collaboration with the Kansas Department of Health and Environment Office of Surveillance and Epidemiology. Health Department staff use the Kansas Electronic Disease Surveillance System (EpiTrax) for managing all reportable diseases. Our department investigates communicable diseases by identifying source cases of infection and studies agent-host-environment relationships to conduct risk assessments to determine which individuals or groups are at an increased risk for contracting a communicable disease. We assist local school districts, long-term facilities, and the broader community of Cowley County by providing verbal and written consultations and issuing quarantine and/or medical isolation orders to mitigate the spread of communicable diseases. The Health Department encourages the engagement of proven strategies to mitigate the spread of illness such as appropriate hand hygiene and the use of vaccines.



In 2021 the Health Department worked to address vaccine hesitancy, a public health concern stemming back several decades. Vaccine hesitancy can be triggered by several factors, such as a previous vaccination event, personal belief systems, distrust in the health care system or misinformation. Missed opportunities for preventative care attributed to vaccine hesitancy leads to poor health outcomes. Therefore, the Health Department worked to tackle vaccine hesitancy by implementing interventions to improve vaccine confidence, acceptance, and initiation.

Moving into 2022, the Health Department continues to focus on vaccine hesitancy. Innovative strategies to combat misinformation by increasing positive vaccine messaging are being employed. A major priority for the Health Department is to initiate effective communication with children about vaccinations. Although children are not old enough to make their own health care decisions, their exposures to vaccine messaging can be very powerful and have lasting impacts that influence their future decision making as adults.

The Health Department has purchased several copies of a children's book titled, "Vax-Force" and is creating opportunities for copies to be introduced in Cowley County libraries and medical offices. Author, Kelsey Rowe, is a medical doctor and provides an accurate framework that is without bias. Vax-Force features characters such as 'Vicky the Vaccine' and 'Willy the White Blood Cell' who are superheroes that protect the individuals from disease by fighting germs like measles, polio, and tetanus. It is our hope that by making this book available, it will increase discussion about vaccines among children and will contribute to the formation of healthy relationships with vaccines and their usage.

Public Health Emergency Preparedness

The Health Department is permanently engaged in Emergency Preparedness. The Department of Homeland Security through the Federal Emergency Management Agency (FEMA) supports the National Incident Management System (NIMS). NIMS provides a common, nationwide approach to allow communities to work together to manage all threats and hazards. NIM applies to all incidents, regardless of cause, size, location, or complexity.

The Health Department is a major contributor in the preparedness process through Emergency Support Function Eight (ESF-8). We coordinate Public Health and Medical that would be available in response to a public health or medical disaster, or any potential or actual incidents requiring a coordinated response, and/or during a disaster of any kind (natural, manmade, etc.). In today's fast changing world, we are continually faced with emerging threats to our health and safety. Severe weather, vector borne, or other contagions, manmade disasters and accidents can strike with little or no warning.



FEMA



The Health Department will continue to work diligently with Cowley County Emergency Management, local first responders, and law enforcement as the response continues. We acknowledge that we cannot do this alone and must respond as a group. The Health Department takes a leadership role in Public Health Emergency Preparedness both at the State and Regional level. Regardless of the challenge, we will always face threats head-on and never run away.

RISE Cowley



RISE Cowley is the county wide coalition of organizations, businesses, and individuals with the shared goal of making Cowley County a better place to live, work, and play. Throughout 2021, RISE Cowley collaborated with various community stakeholders to promote healthier living. The organization partnered with local farmers' markets to promote healthier and more conscious dietary choices. RISE Cowley also took part in the Community Health Needs Assessment, a project focused on determining the underserved health needs of the community.

Children and Family Health

Maternal & Child Health

The Maternal and Child Health (MCH) Program focuses on achieving optimal health for women and their children. The Health Department invests in numerous MCH services to strengthen the community by improving population health and quality of life. MCH services provided by the Health Department improve pregnancy and birth outcomes, encourage proper prenatal and well-childcare, implement infant and maternal mortality prevention strategies, make appropriate referrals for advanced health care, ensure early identification of infants and families at risk, and more.

Healthy Start Home Visits

Our Healthy Start Home Visitor (HSHV) provides services to pregnant women and families with children in Cowley County regardless of income, race, ethnicity, legal residency, or family structure. She visits mothers during and after pregnancy in their homes or other preferred location to provide friendly support and health education. Her experience and personal testimony as a mother and community figure allows her to help connect mothers with essential resources to improve and maintain their health and the health of their families. During 2021, she made 23 prenatal visits and 47 postpartum visits.



KANSAS
MATERNAL &
CHILD HEALTH



safe sleep
Alone, on their Back and in a Crib



Safe Sleep

Safe Sleep aims to improve sleeping environments and reduce the incidence of sudden infant death syndrome (SIDS). Safe Sleep offers resources to equip parents with vital information to make informed decisions about their child's sleeping arrangements. Safe sleep services can be provided in conjunction with other Health Department services. Implementation of the Safe Sleep Program in 2018 has reduced the incidence of SIDS in Cowley County.



Pediatric Health Assessments

Pediatric health assessments and screenings are available for children of all ages. Our public health nurses assess children's overall growth and development and can perform vision, hearing, and dental screenings. Routine health assessments allow for early identification of health concerns and treatment initiation to improve health. In 2021 the Health Department conducted 527 pediatric health assessments.



Tiny Teeth

The Tiny Teeth Program provides health education on oral hygiene and fluoride varnish applications to children to reduce the incidence of dental caries. Fluoride varnish applications are offered in conjunction with pediatric health assessments or for those that request service. Early initiation of oral health practices and routine screenings accelerate positive oral health outcomes for life. Fluoride varnish applications can begin as early as 6 months of age or initial eruption of the first tooth. Fluoride is applied to baby teeth by a public health nurse. Application can be repeated 3 times each year.

Turn a Page. Touch a Mind

Turn a Page. Touch a Mind. (TAP-TAM) is an early literacy program in Kansas that aims to provide children with books to engage early literacy skills. The Health Department is 1 of nearly 300 medical providers that participates in TAP-TAM by gifting all children ages 0-5 a developmentally appropriate book at the time of their pediatric health assessment. In 2021 the Health Department distributed 123 books for Cowley County Children.



Turn a Page.
Touch a Mind



Child Care Facility Licensing Program

The Child Care Facility Licensing Program ensures the regulation of child care facilities to protect the safety of children and influence positive health outcomes. A trained surveyor inspects child care facilities to confirm that the safest and healthiest child care is being delivered. Regulation of these facilities sets a minimum threshold of

acceptance and ensures that child care providers comply with state requirements.

2021 brought along major changes for the Child Care Facility and Licensing Program. Previously, the Health Department had an agreement with the Kansas Department of Health and Environment to employ two full-time surveyors to carry out inspections in Elk, Chautauqua, Harper, Sumner, and Cowley Counties. In July, the agreement was renegotiated to instead employ one full-time surveyor and reallocate all resources to Cowley County. This adjustment allows our surveyor to apply her training and focus her efforts on the safety and wellbeing of Cowley County children and child care providers. Our surveyor protects the health of nearly 700 children at more than 50 child care facilities in Cowley County.



Women, Infants, & Children

The Woman, Infants and Children (WIC) Program was created by the United States Department of Agriculture's (USDA) Food and Nutrition Service (FNS) in 1974. Eligible women and children can receive nutritional education, supplemental foods, and support as their family grows and transitions. WIC services are available for pregnant, breastfeeding, and non-breastfeeding postpartum women and their children up to age five.

The goals of the WIC program are to establish early contact with expecting mothers, initiate prenatal care, and improve health behaviors associated with poor nutrition. This improves health outcomes by improving maternal health and decreasing infant mortality.



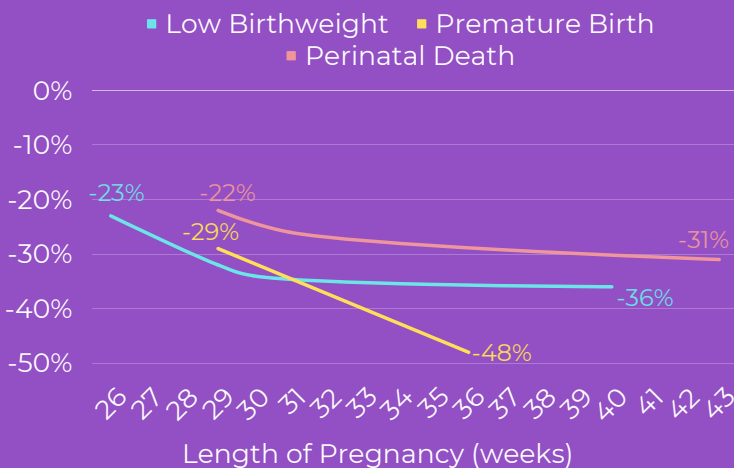
Did You Know?

- Pregnant women and children up to age 5 **automatically qualify** if they're Medicaid participants?
- WIC is provided out of both the **Winfield and Ark City offices?**
- Our **Breastfeeding Peer Counselor** provides support to mothers throughout their breastfeeding journey?
- We are a proud supporter of **Breastfeeding Advocates of Cowley County (BACC)?**
- Women on WIC during their pregnancy have **longer, safer** pregnancies and deliver babies with **higher birth weights?**
- WIC **decreases** the number of premature births and infant deaths?
- WIC participants receive a **benefits package** tailored to fit their needs?



Studies found a marked reduction in adverse birth outcomes among WIC participants over non-participants.

Percent Reduction in Risk of Adverse Birth Outcomes



WIC provides a boost to our local economy by issuing food vouchers to be exchanged at local grocery stores. During 2021, the WIC program added over **\$530,000** to the Cowley County economy and provided healthy foods to more than **900 families** each month.

WIC helps create healthier neighborhood food environments by improving the availability of fruits, vegetables, and whole grains for many low-income communities.

Children who participate in WIC continuously from birth to age 4 had a **10-12% lower risk of obesity**.

Family Planning (Title X)



Family Planning is a confidential program that offers reproductive health services for men and women. This unique program equips its participants with the health education and life planning skills to make informed decisions about their own reproductive health. Our public health nurses provide individualized health education and support to improve reproductive health. Family Planning helps its participants achieve optimal family size and spacing between children by administering contraceptives, pregnancy testing, and sexually transmitted infections (STI) testing, and treatment as needed. The Health Department does not support or promote the use of abortion. In 2021 the Health Department provided 1,176 service visits through the Family Planning Program.

Family Planning Services Offered by the Health Department

- Reproductive health education
- Testing & treatment for STIs
- Pregnancy testing
- Screening for cervical & breast cancer through pelvic & breast exams
- Contraceptives



Early Detection Works

The Early Detection Works Program (EDW) provides care to women that are uninsured and are at risk for developing breast or cervical cancers. Each year, more than 5,300 Kansas women and nearly 20,000 screening and diagnostic services are provided through EDW. The Health Department believes strongly in the importance of routine preventative care and early detection and helps connect Cowley County women with EDW services to reduce advanced disease. Our nurses provide support to women who receive a diagnosis and facilitate the development of a comprehensive treatment plan.



Did you know?

- Nationally, 1 in 8 women will develop breast cancer during her lifetime?
- Breast cancer is the most common cancer among Kansas women. About 2,250 Kansas women are diagnosed with breast cancer each year, with around 375 related deaths?
- Cervical cancer is another common cancer among Kansas women. Around 115 Kansas women are diagnosed with cervical cancer each year, with around 30 related deaths?

Environmental Health



The Health Department's Environmental Health Program works to assess, correct, control, and prevent physical, chemical, biological, and social environmental hazards. Our environmental health specialist implements strategies to protect the health and wellbeing of Cowley County residents and visitors.

Cowley County Environmental Threats

Water

The water we drink and use provides an avenue for contaminants, including toxins and bacteria. Proper maintenance of not only interior plumbing but exterior water sources is key to keeping water safe and clean.

Air

Airborne contaminants and hazards, like viruses and allergenic particulates, are constantly present. Appropriate implementation of HVAC and reduction systems provide a good measure of safety against these with air filtration and circulation.

Dilapidated Buildings & Debris

Abandoned buildings, construction debris, and material hazards threaten not only our physical health, but provide harborage for rats, pests, and other nuisances. It's up to all of us to keep our environment clear of these hazards.

Insect & Zoonoses

Insects like mosquitoes, ticks, and bedbugs can have an enormous impact on physical and mental health through infestations and the spread of diseases, such as the Zika virus, Malaria, and Lyme Disease. Wild animals can carry these insects to humans and be vectors for diseases that affect our pets as well as ourselves.



Did You Know?

- Environmental health hazards indirectly and directly impact health?
- Environmental health hazards contribute to the development of chronic health conditions like **asthma, respiratory and heart diseases, and even cancers?**
- The primary conduits for home contamination are **air and water?**
- Contaminated water is linked to diseases like **diarrhea, cholera, dysentery, hepatitis A, and polio?**
- Exposure to **radon**, a common radioactive gas found all over Kansas, can **cause lung cancer?**
- Feelings of illness, malaise, and exhaustion with no discernable source may be attributed to **Sick Building Syndrome (SBS)?**
- All properties with a private wastewater system are required to have the system inspected before the property can be sold?

Environmental Health Continued

The safe disposal, treatment, and reintroduction of the water we use back into our environment is more important than many realize, and it is one of the critical functions that the Environmental Health Program performs. Wastewater from our homes – particularly from our toilets and washing machines – contain many harmful contaminants if not controlled.

The proper implementation of private systems for our community not serviced by public sewer is critical to keeping the environment we play, work, and live in clean of contamination. The Environmental Health Program does this in several ways, including:

- Inspection of private wastewater systems serving homes being sold in Cowley County
- Design and oversee the installation of new septic systems for home construction or repair,
- Screening of private water wells for sources and types of contamination
- Prompt investigation and response to any report of a failing septic system

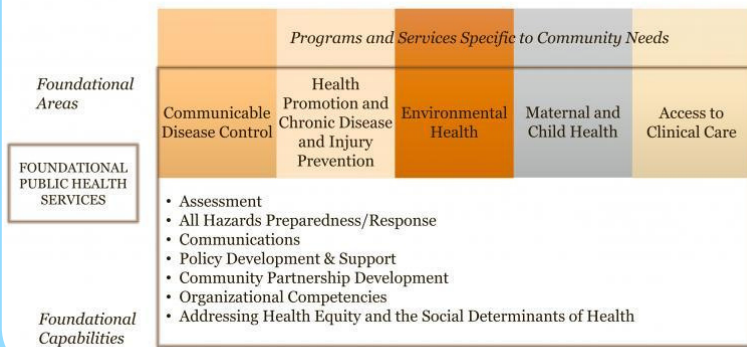


Common Kansas Groundwater Contaminants

- Arsenic
- Lead
- Mercury
- Nitrate
- Fluoride
- Sodium
- Sulfate
- Iron
- Benzene
- Trichloroethylene
- Atrazine

Health Department Staffing

Kansas Foundational Public Health Services Model



The City-Cowley County Health Department provides the community a full range of public health services through the use of the Kansas Foundational Public Health Services Model. Health Department staff are dedicated to providing the highest quality service possible. During 2021 we constantly evaluated community needs so that we could provide services, track and monitor results, and evaluate population health outcomes.

All Health Department staff value the public health principles stated in our mission, and we are proud to serve the community. We work each day to better the lives of the citizens of Cowley County and make the Health Department a vital resource for all Cowley County residents.

2021 City-Cowley Health Department Personnel

Thomas Langer, MPA- Administrator/Public Health Officer
 Allyson Payne, MPH- Executive Assistant/Epidemiologist
 Karen Sattler, RN- Director of Nursing/MCH Supervisor
 Kelli Waggoner, RN- Public Health Nurse/WIC Coordinator
 Sara Qualls, RN- Public Health Nurse
 Rochelle Graham, RN- Public Health Nurse
 Karen Hardin, RN- Public Health Nurse
 Tara Finuf- Fiscal Accounts Manager
 Teri Bruner- Medical Services Accounts Coordinator
 Tanner D. Langer- Environmental Health Officer/PHEP
 Daniel Vildasol- Public Information Officer/PHEP
 Josephine Olivares- Healthy Start Home Visitor
 Patricia Wimmer- Child Care Licensing Surveyor
 Gretchen Walker- Office Assistant
 Jessica Dorman- Office Assistant
 Aleashia Tanner- Office Assistant
 Ashley Leighty- Office Assistant
 Alicia Ramey, RD- WIC Nutritionist
 Jessie Percell- Breastfeeding Peer Counselor

Contracted Professionals:

Medical Officer:
 Adam Keesling, MD

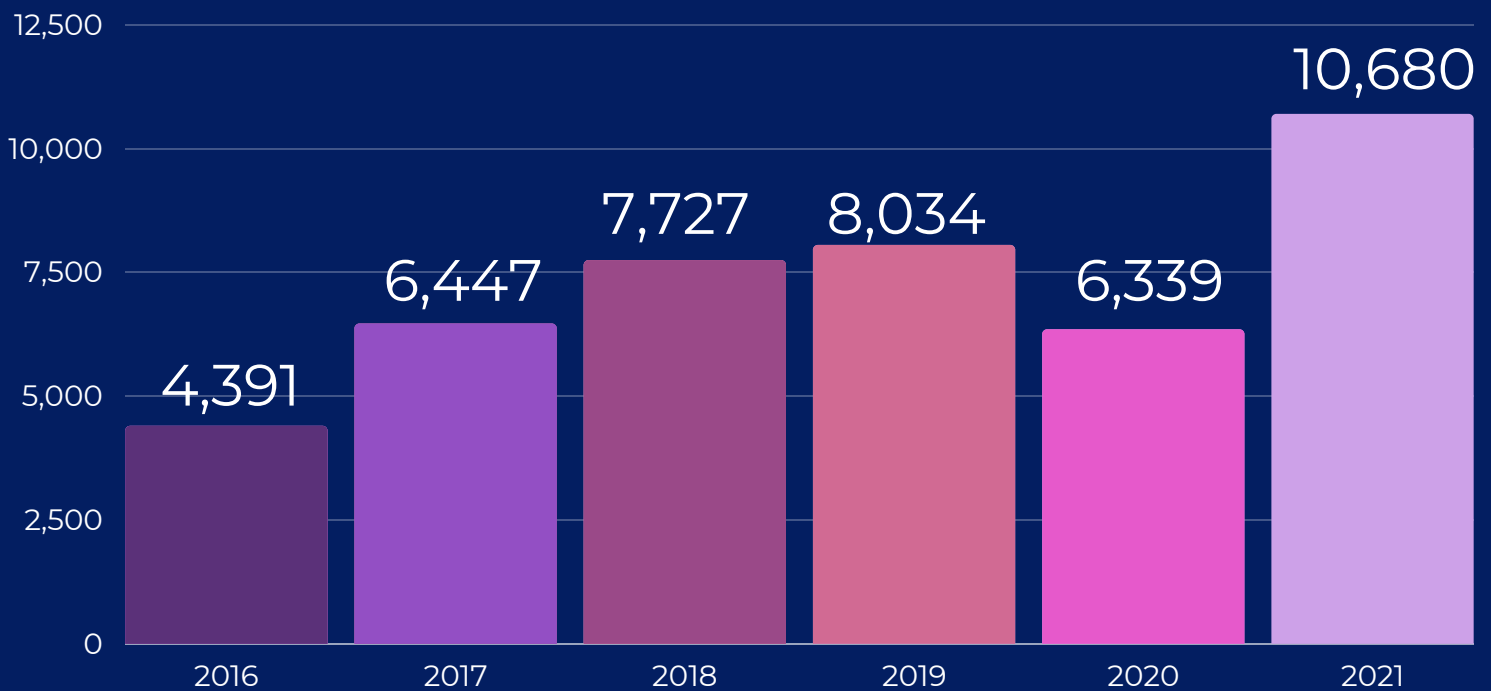
Family Planning:
 Ginger Bahruth, PA

Consulting Pharmacist:
 Renee Price, PharmD

Clients Served

The Health Department provides numerous services to improve the health of Cowley County. Services are made available throughout the continuum of life. At the conclusion of each year, we review the number of unduplicated patients that received services to evaluate our reach and ensure that we are continuing to grow and serve the county. In 2021, we conducted 21,914 service visits and provided at least one Health Department service to 10,680 people. Below is graphic to show our growth over a six year period.

Clients Receiving Service from the Health Department by Year

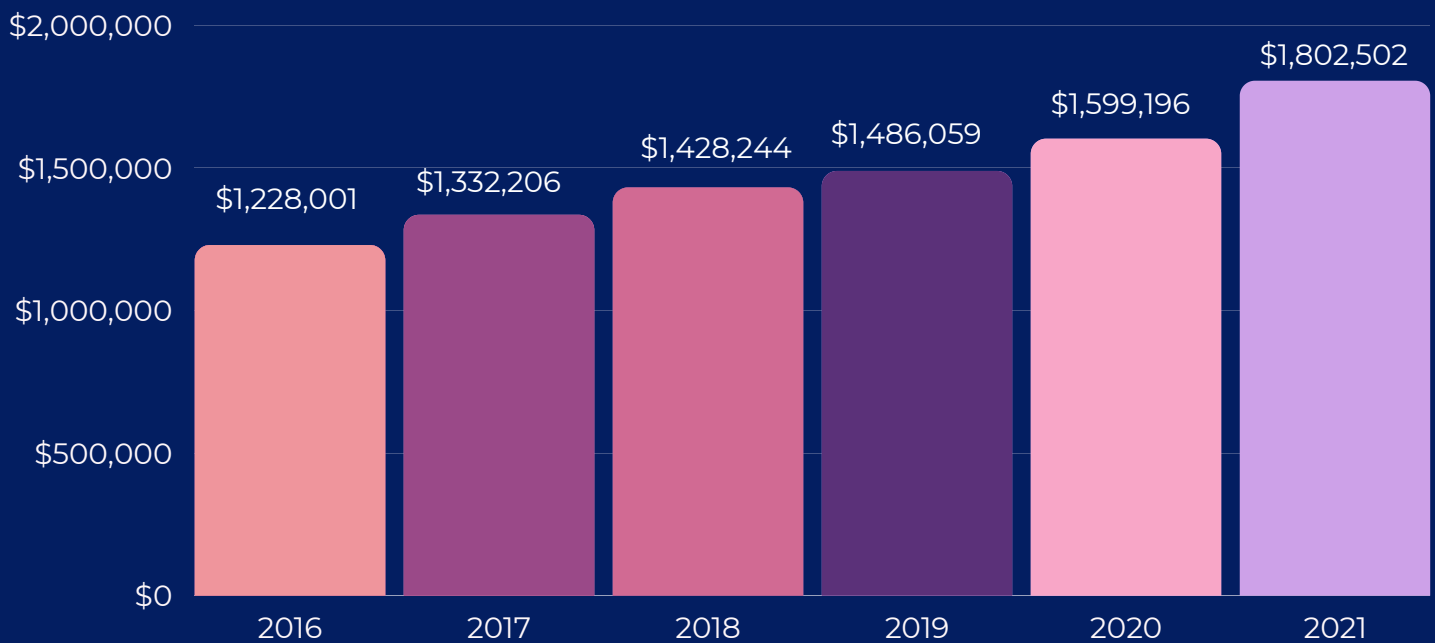


Prevent ~ Promote ~ Protect

Financial Report

The Health Department continues to operate efficiently while providing excellent services to all county residents. The fiscal condition of the City-Cowley County Health Department is stable. During 2021, the Health Department had an annual fiscal audit performed to ensure that all organizational accounting practices are consistent with generally accepted accounting principles for governmental entities and public law. The final report indicated that the accounting and fiscal reports for the year were truthful and correct as presented. All requisite state required reports and filings that account for expenditure of funds entrusted to the Board of Health were made on time. By taking meticulous care of the funds entrusted to us during 2021, the Health Department continued to exhibit professional fiscal management in keeping with the highest expectations of our citizens and the local, state, and federal governments.

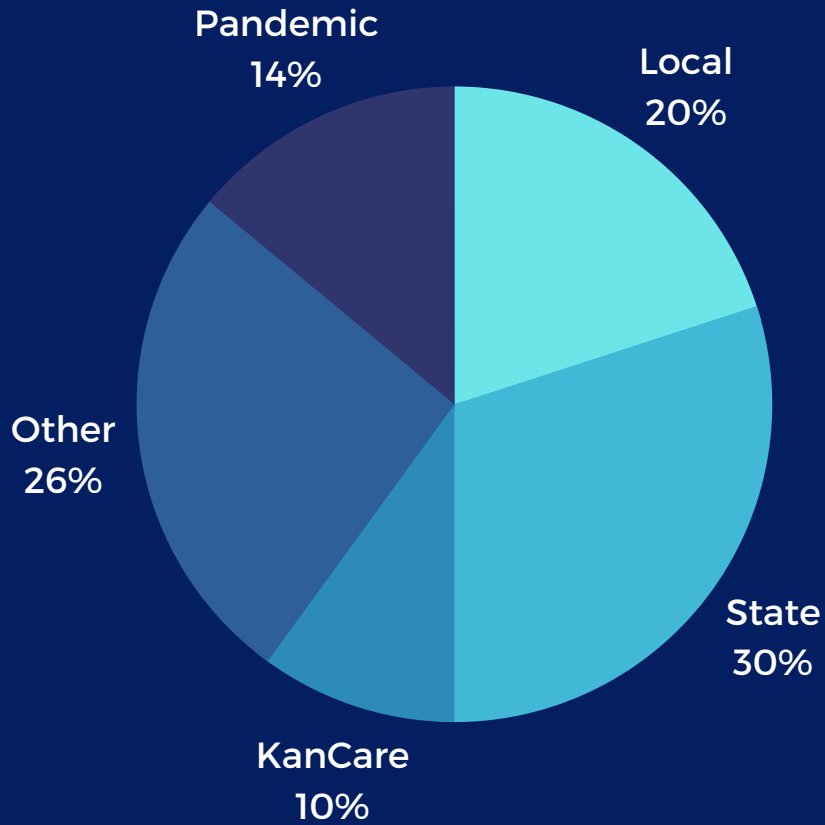
Health Department Revenue Performance



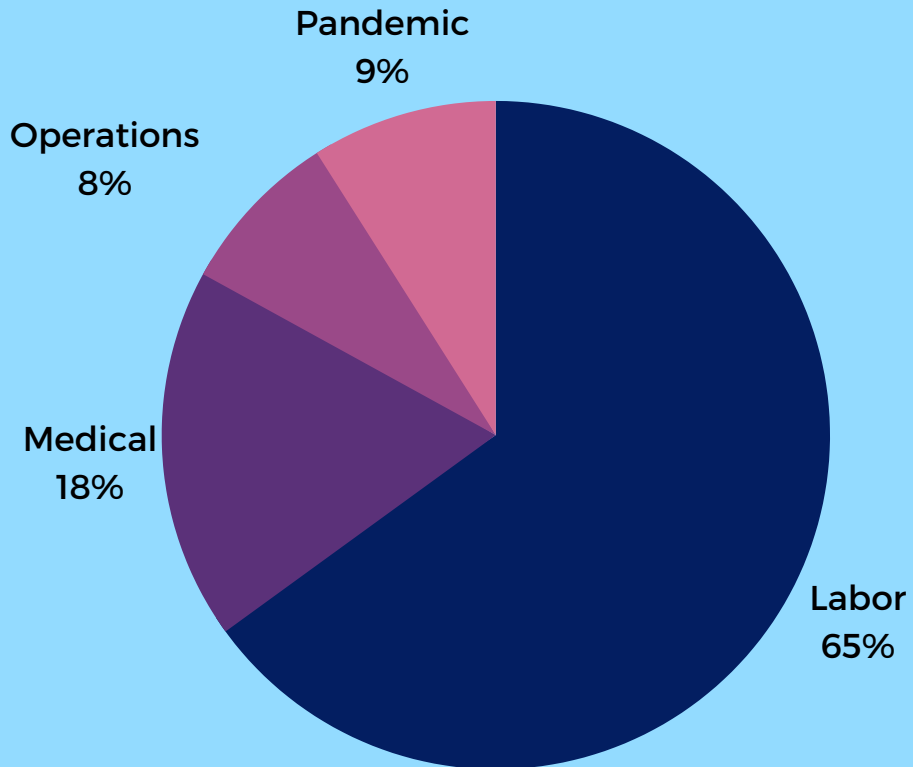
Prevent ~ Promote ~ Protect

Financial Report Continued

2021 Health Department Revenue by Source



2021 Health Department Expenditures by Type



The Ambulance Down in the Valley

'Twas a dangerous cliff, as they freely confessed,
Though to walk near its crest was so pleasant;
But over its terrible edge there had slipped
A duke, and full many a peasant.
The people said something would have to be done,
But their projects did not at all tally.
Some said, "Put a fence 'round the edge of the cliff,"
Some, "An ambulance down in the valley."

The lament of the crowd was profound and was loud,
As their hearts overflowed with their pity;
But the cry for the ambulance carried the day
As it spread through the neighboring city.
A collection was made, to accumulate aid,
And the dwellers in highway and alley
Gave dollars or cents - not to furnish a fence -
But an ambulance down in the valley.

"For the cliff is all right if you're careful," they said;
"And if folks ever slip and are dropping,
It isn't the slipping that hurts them so much
As the shock down below - when they're stopping."
So for years (we have heard), as these mishaps occurred,
Quick forth would the rescuers sally,
To pick up the victims who fell from the cliff,
With the ambulance down in the valley.

Said one, to his peers, "It's a marvel to me
That you'd give so much greater attention
To repairing results than to curing the cause;
You had much better aim at prevention.
For the mischief, of course, should be stopped at its source,
Come, neighbors and friends, let us rally.
It is far better sense to rely on a fence
Than an ambulance down in the valley."

"He is wrong in his head," the majority said;
"He would end all our earnest endeavor.
He's a man who would shirk his responsible work,
But we will support it forever.
Aren't we picking up all, just as fast as they fall,
And giving them care liberally?
A superfluous fence is of no consequence,
If the ambulance works in the valley.

The story looks queer as we've written it here,
But things oft occur that are stranger;
More humane, we assert, than to succor the hurt
Is the plan of removing the danger,
The best possible course is to safeguard the source;
Attend to things rationally.
Yes, build up the fence and let us dispense
With the ambulance down in the valley.

- Joseph Malins